

# APA SUSTAINABLE COMMUNITIES DIVISION WEBINAR

March 26, 2015

## Collaborating for Sustainability Planning



American Planning Association  
**Sustainable Communities Division**

*Making Great Communities Happen*



# Thanks to our 2014-2015 Division Sponsors!

- **Farr Associates**
- **Clarion**
- **WRT**
- **VHB**
- **Kending Keast Collaborative**
- **PlaceMatters**
- **Ecology and Environment, Inc**
- **Post Carbon Institute**
- **Lehigh Valley Planning Commission**



*Interested in sponsoring for 2015-2016? Email [apascd@gmail.com](mailto:apascd@gmail.com) or visit <http://tinyurl.com/sponsorAPASCD> for an information packet!*



# Notes

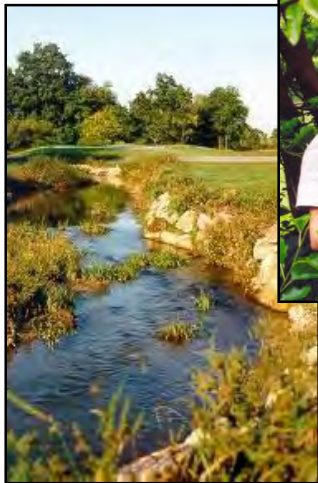
- 1.0 AICP CM credit approved
  - Attendance is required for the duration of the event in order to receive CM credit
  - Instructions will be sent after the event
- We will also send out an evaluation form – please give us your thoughts about this webinar, and any other webinars that you'd like to see.
- Questions
  - Q & A after all speakers
  - Moderator will read questions
  - Please type any questions into the chat box

# Today's Speakers

- **Joanna Nadeau** - Director of Community Programs, Audubon International
- **Sal Celona** - Chair, Sustainability Community Alliance, Rio Verde, AZ
- **Sheila Rose, AICP** - Director, Department of Sustainable Development, Coconut Creek, FL
- **Linda Whitman, RLA** - Senior Planner, Coconut Creek, FL



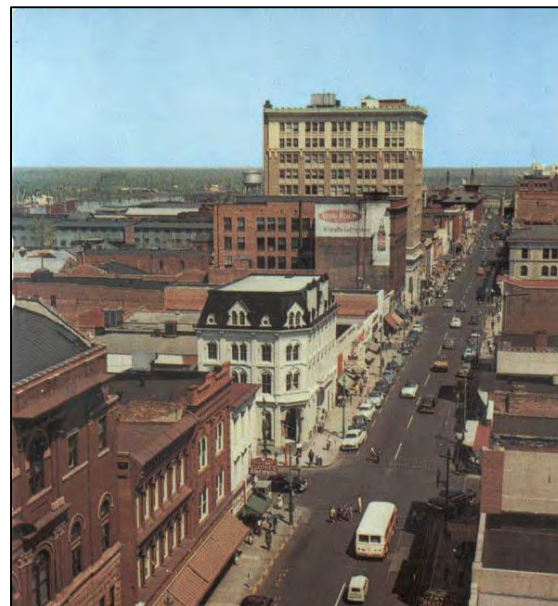
***Our Mission:*** To deliver high-quality environmental education and facilitate the sustainable management of land, water, wildlife, and other natural resources in all places people live, work, and play.





# Sustainable Communities Program

*Certification, Education,  
and Technical Assistance*





## Sustainable Communities

“Many people now seek out homes and communities that are more **resource efficient and sensitive to the environment,**”

-Gary Thomas, National Association of Realtors



“Regions with amenities attract and retain **more talent,** which is necessary to compete effectively in a national and world marketplace.”

-Richard Florida, *The Rise of the Creative Class*



## Ecotourism Industry

- Global Market:
  - 7% of market
  - \$77 billion
  - Growing, will accelerate
- United States:
  - \$400 billion tourism industry; \$200 billion for adventure travel
  - \$113 billion government tax revenue generated
  - 43% vacations included ecotourism activities





# Sustainable Communities



“Sustainability is...  
meeting the needs of the  
present without  
compromising the ability  
of future generations to  
meet their own needs.”

*-1987 Brantland  
Commission Report*

Population

50,000

10,000

2,000

Owensboro, KY

**Coconut Creek, FL**

Henrietta, NY

Hilton Head Island, SC

**Eufaula, AL**

The Landings, GA

**Williamston, NC**

Rio Verde, AZ

Seabrook Island, SC

**Stowe Mountain, VT**



## Stages of Planning

### STAGE ONE:

Community Outreach, Education, and Assessment



### STAGE TWO:

*Sustainable* Planning



### STAGE THREE:

Implementing the Plan

# Stage 1: Greening Your Community



**Steering Committee**

| Focus Area: Economic Development & Tourism   | YES | NO | NOT APPLICABLE |
|--|-----|----|----------------|
| Walking the Walk   |     |    |                |
| • Establish a green job training partnership   |     |    |                |
| • Track green jobs and assess workforce capacity   |     |    |                |
| • Encourage the expansion of existing economic assets using existing infrastructure through incentive-based policy tools (i.e., business loan programs, streamlined permitting, mainstreet incubators, etc.) |     |    |                |
| • Identify or create distinct neighborhoods with unique appeal   |     |    |                |
| • Identify or create special districts for a diverse set of focused investment (i.e., arts district, waterfront district, etc.)  |     |    |                |
| • Inventory local natural assets/amenities through work with local tourism departments, businesses, non-profits, and civic organizations   |     |    |                |
| • Highlight local and regional cultural assets through community sponsored public art and event nights   |     |    |                |
| • Operate historic and cultural preservation departments, or support local organizations   |     |    |                |
| • Fund or contribute to regional and local historic and cultural preservation efforts  |     |    |                |
| • Preserve scenic vistas through siting (i.e., buildings, communication towers, signs, etc.)   |     |    |                |
| • Stimulate local and regional economy by offering regular programming on public lands (i.e., nature walks, artist retreats, ski or golf tournament)   |     |    |                |
| • Purchase municipal operating goods from local sources (i.e., paper products, signage, furniture, etc)  |     |    |                |
| • Prioritize the redevelopment of lands with existing infrastructure and public services and the maintenance and rehabilitation of existing residential, commercial and industrial structures                |     |    |                |
| • Track amount of tourism that takes part in eco-kayakers, hikers, etc.)   |     |    |                |
| • Synchronize marketing efforts with local business Development Authority marketing strategy to c  |     |    |                |

**Baseline Assessment**





- Develop comprehensive plan (or add onto existing plan)
  - Assemble portfolio of existing projects/partners
  - Engage community in defining vision
  - Set specific, time-bound objectives
  - Select **sustainability “indicators”** tied to goals for each focal area
- All staff thoroughly review proposed plan



***Audubon International Planning Award***



## **At the Heart: *Focal Areas***

1. Agriculture
2. Economic Development/Tourism
3. Education
4. Environmental issues
5. Governance
6. Public Health
7. Housing
8. Open Space and Land Use
9. Planning, Zoning, Building & Devt.
10. Population
11. Public Safety and Emergency Mgt.
12. Recreation
13. Resource Use (water, energy, waste)
14. Volunteerism and Civic Engagement
15. Transportation





# APA - Comprehensive Planning Standards



- Released 2015 (*PAS Report 578*)
- From The Sustaining Places Initiative, launched in 2010
- Draws from Sustaining Places: The Role of the Comprehensive Plan (*PAS Report 567*) – released in 2012

“...define[s] the role of comprehensive plans in addressing the sustainability of human **settlements.**”

-*Sustaining Places*, PAS 578

Available at [www.planning.org](http://www.planning.org)

# Principles

- Livable Built Environment (11)
- Harmony with Nature (10)
- Resilient Economy (7)
- Interwoven Equity (9)
- Healthy Community (7)
- Responsible Regionalism (9)



**Processes**  
Authentic Participation  
Accountable Implementation

**Attributes**  
Consistent Content  
Coordinated Characteristics



**SCP  
Stage 2**



## SCP Areas & APA Principles

*Healthy Community*

1. Agriculture
2. Recreation
3. Public Health

*Livable Built Environment/  
Responsible Regionalism*

4. Open Space and Land Use
5. Planning, Zoning, Building/Devt.
6. Transportation

*Resilient Economy*

7. Education
8. Economic Development/Tourism

*Harmony with Nature*

9. Environmental Issues
10. Resource Use

*Interwoven Equity*

11. Housing
12. Population
13. Public Safety and Emergency Mgt.
14. (local) Governance
15. Volunteerism/Civic Engagement







# Case Study: Rio Verde, AZ



Rio Verde



## Rio Verde, AZ

### Demographics:

- 1,400 residents
- 980 homes
- 67% seasonal; 33% residents
- Age-restricted adult community (55+)



# Rio Verde Governance

Rio Verde Community Association  
( RVCA) Organization

Rio Verde Country Club

Rio Verde Residents

RVCA Board of Directors

RVCA Committees

Administration



## Strategic Planning

2010 -Five-year focus

- Community Culture,  
**Infrastructure,**  
Marketing, Quality of  
Life
- Formation of Steering  
Committee

A “Green & Growing”  
Community





## Standing Committees

- Architectural
- Audit
- Budget/Finance
- **Common Area Landscape & Renovation**
- Communications
- Community Center Operations
- Community Events
- Community Recreation
- Community Utilities
- Marketing and Publicity
- Property/Community Appearance
- Security
- Streets and Drainage
- **Sustainable Community Alliance -> Living Green in the Verdes**
- Town Center Planning
- RV Country Club Liaison
- Tennis Liaison



## Rio Verde Projects

Use wastewater on golf course

A “Green & Growing”  
Community







## Rio Verde Projects

Use wastewater on golf course

A “Green & Growing”  
Community





- Formed Steering Committee
  - Residents & Staff
- Resident surveys
  - General (2013)
  - Tailored questions (2014)
- Demonstration project(s)
- Community event with breakout sessions (2014)

**APA Process Standard:**  
*Authentic Participation*

- ✓ Involves all segments of community in visioning, planning, monitoring

## Community Engagement

*LIVING GREEN IN THE VERDES*  
*"The Sustainable Way"*



*Saturday, February 1, 2014*

*9:00 am - Noon*

*Río Verde Community Center*

*Learn about "Our water - a scarce resource and how we can manage it," "More efficient and effective outdoor water use," and "Exploring Solar Energy Solutions for your home."*

*Breakout sessions and  
Vendor Trade Show  
Raffle drawing*

*Sponsored by the  
The Sustainable  
Community Alliance*  
**RIO VERDE**  
COMMUNITY ASSOCIATION

Working Toward  
Certification  
Audubon  
International

| FOCUS AREA  | PRIORITY  | GOALS & OBJECTIVES  | POLICIES, PRACTICES OR STRATEGIES  | TIMELINES                      | RESPONSE/ INDICATORS  |
|---|-----------|---|--|--------------------------------|---|
| Population  | Secondary |   |  |                                |   |
|   |           | G1. Attract and retain new members to our community<br><br>G2. Make certain that all residents feel represented in governance, social and health related matters            | P2. Develop a formal residential "Opinions, Comments and Complaints" system monitored by RVCA  | Within the next 5 years        | II. Total resident<br><br>II. Percentage of part-time or seasonal<br><br>I2. Public satisfaction offered  |
| Public Health and Safety  | Primary   |   |  |                                |   |
| Healthcare<br><br>Verde Cares<br><br>"Firewise" Organization<br><br>Fire/EMS response force |           | G1. Foster a safe and healthy community with a high quality of life<br>O1a. Encourage physical well-being of residents<br>O1b. Reduce disaster risk for homes and residents | P1a. Promote wellness programs<br><br>P1a. A monthly or bi-monthly health services program which can provide screenings on various health related issues | Current/on-going<br><br>2014-5 | IIa. % of population regular fitness club<br>art fitness center<br><br>IIa # of blood donations and blood pressure<br><br><br>IIb. Firewise Co<br><br><br>IIb. Emergency response time in minutes |

**APA Process Standard:**  
*Accountable Implementation*

- ✓ Clear responsibilities
- ✓ Metrics

**APA Plan Attributes:**  
*Consistent Content*

- ✓ Goals, objectives, policies linked
- Coordination*
- ✓ Comprehensive



## Rio Verde: Stage One

### Priority Areas

- Education
- Environment
- Public Health
- Public Safety
- Resource Use
- Volunteerism
- Transportation



Develop a community-wide Long Term Sustainability Plan





# Stage Two: Tracking Projects

| RIO VERDE, ARIZONA<br>PROGRAMS & PROJECTS<br>MATRIX   | A<br>G<br>R<br>I<br>C<br>U<br>L<br>T<br>U<br>R<br>E | E<br>C<br>O<br>D<br>E<br>V<br>&<br>T<br>O<br>U<br>R<br>I<br>S<br>M | E<br>D<br>U<br>C<br>A<br>T<br>I<br>O<br>N | E<br>N<br>V<br>I<br>R<br>O<br>N<br>M<br>E<br>N<br>T<br><br>I<br>S<br>S | G<br>O<br>V<br>E<br>R<br>N<br>A<br>N<br>C<br>E | P<br>U<br>B<br>L<br>I<br>C<br><br>H<br>E<br>A<br>L<br>T<br>H | H<br>O<br>U<br>S<br>I<br>N<br>G | O<br>P<br>E<br>N<br><br>S<br>P<br>A<br>C<br>E<br>&<br>L<br>A<br>N<br>D | P<br>L<br>A<br>N<br>N<br>I<br>N<br>G<br>&<br>Z<br>O<br>N<br>I<br>N<br>G | P<br>O<br>P<br>U<br>L<br>A<br>T<br>I<br>O<br>N | P<br>U<br>B<br>L<br>I<br>C<br><br>S<br>A<br>F<br>E<br>T<br>Y | R<br>E<br>C<br>R<br>E<br>A<br>T<br>I<br>O<br>N | R<br>E<br>S<br>O<br>U<br>R<br>C<br>E<br><br>U<br>S<br>E | V<br>O<br>L<br>U<br>N<br>T<br>E<br>E<br>R<br>I<br>S<br>M | T<br>R<br>A<br>N<br>S<br>P<br>O<br>R<br>T<br>A<br>T<br>I<br>O<br>N |  |
|---|---|--|---|--|--|--|---------------------------------|--|---|--|--|--|---|--|--|--|
| <p>Ongoing (OG)<br/>Periodic (P)</p> <p><i>* programs and projects in blue have been completed as project reports</i></p> |   |  |   |  |  |  |                                 |  |   |  |  |  |   |  |  |  |
| <i>Blood Drive (OG)</i>   |   |  |   |  |  | X  |                                 |  |   |  |  |  |   |  | X  |  |
| <i>Electric vs. propane heating of pool (OG)</i>  |   |  |   | X  |  | X  |                                 |  | X   |  |  |  |   | X  |  |  |
| <i>Installation of solar panels at Community Center for 25% of daily electrical requirements (OG)</i>                     |   |  |   | X  |  |  |                                 |  | X   |  |  |  |   | X  |  |  |
| <i>Reduction or elimination of salinity to waste water stream used for golf course irrigation (OG)</i>                    | X   |  |   | X  |  | X  |                                 |  |   |  |  | X  | X   |  |  |  |



## Rio Verde: Stage One

### Demonstration Site: *Pollinator garden*

- Contribute to conservation by using native plants
- Educate the public
- Community Assoc. & Country Club
  - Volunteers/staff
- High visibility area



A “Green & Growing”  
Community



## Rio Verde: Stage Two

- Turf restored to desert landscape at RVCC



Buckskin Drive Before



Buckskin Drive After



## Lessons Learned

- “Living Green in the Verdes” Fair







## Lessons Learned

- Community Planning = Sustained effort
- Way to demonstrate commitment to environment and to our community

Reflections on Rio Verde:

- Be creative & willing to answer questions
- Need outside support and resources



A “Green & Growing”  
Community



## Contact Information:

Sal Celona

[mpcelona@aol.com](mailto:mpcelona@aol.com)

rioverdehoa.org





# Case Study: Coconut Creek, FL





## Pieces in Place

- Greenway Master Plan
- Mainstreet Design Standards (2004)
- City Green Plan in development
  - AI reviewed Green Plan against principles of sustainability
  - Finalized 2010





- Implementation – strategies, policies, practices
- Measuring indicators and progress toward targets
  - 26 Action Items in progress, 2 completed (as of 2010)
    - E.g. increasing the number of bus shelters and bike racks, the City Shuttle Services, and expanding the Greenway Trails.
  - Green Report created for annual monitoring (Green Team)

**APA Process Standard:**  
*Accountable Implementation*

- ✓ Clear responsibilities
- ✓ Funding sources
- ✓ Metrics
- ✓ Linked with budget planning





- Implementation – strategies, policies, practices
- Measuring indicators and progress toward targets

Designation as a ***Certified Audubon International Sustainable Community***



# COCONUT CREEK CITY GREEN PLAN

*Sheila Rose, AICP*  
*Director*  
*Sustainable Development*

*Linda Whitman, RLA*  
*Senior Planner*  
*Sustainable Development*



*“Creating a Culture of Green Excellence”*

**COCONUT  
CREEK**  
Sustainable. Creative. at the Heart.

# Location



**ATLANTA**

**COCONUT CREEK**

**FT LAUDERDALE**  
**MIAMI**

Nassau  
**The Bahamas**

© 2013 INEGI  
© 2013 Google  
Image Landsat  
Data SIO, NOAA, U.S. Navy, NGA, GEBCO

Imagery Date: 4/9/2013 29°54'52.85" N 82°14'20.04" W elev 7 ft eye alt 1132.36 mi

Google earth



# About



- Incorporated in 1967
- 55,000 residents
- 12 square miles
- 60% Non-Hispanic White
- 20% Hispanic
- 14% Black or African-American
- 6% Other





**COCONUT  
CREEK**

BUTTERFLY CAPITAL OF THE WORLD™

Arbor Day





**Another Planning Document?!?!**



# WHY A GREEN PLAN?

- Advances City's green culture
- Consistent with growing trends
- Result of Vision 2020
- Defines sustainability for the City
- Guides staff on developing programs
- Provides a cohesive plan for "greening"

# MAIN OBJECTIVES OF CITY GREEN PLAN

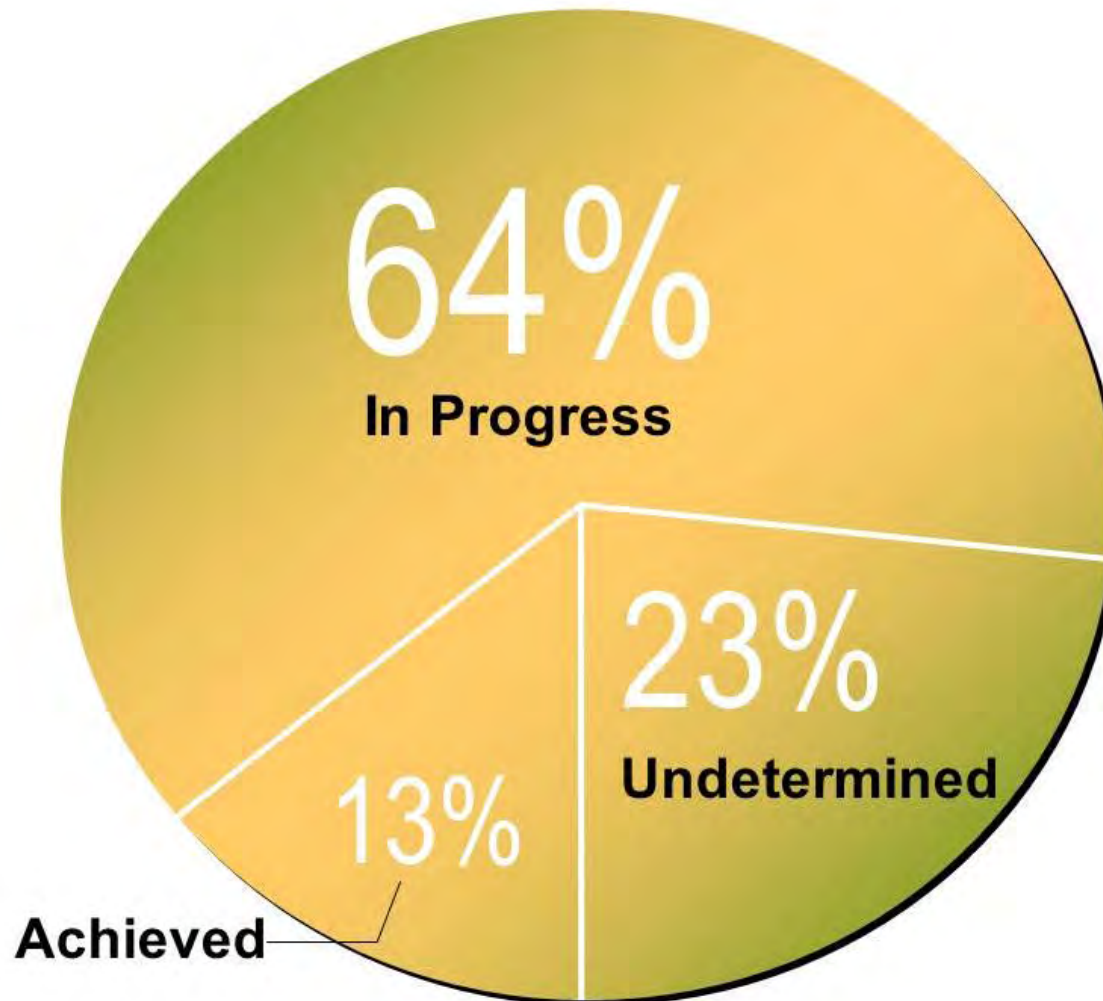
- Environmental issue / GHG reductions
- Decision making / budget alignment
- Monitor progress / accountability



# BENEFITS OF REPORTING

- Management, coordination, accountability
- Benchmarks & monitors  
(GHG, green bldg, tree canopy)
- Evaluates each category and action
- Cohesive data reporting
- Budget alignment

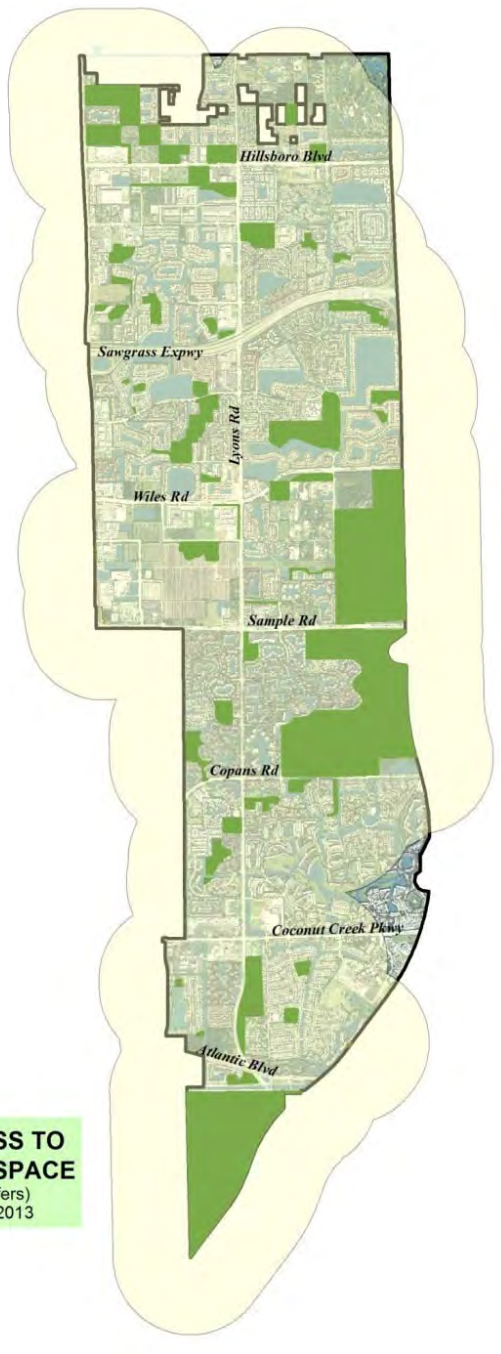
# Implementation Status



# Green Building

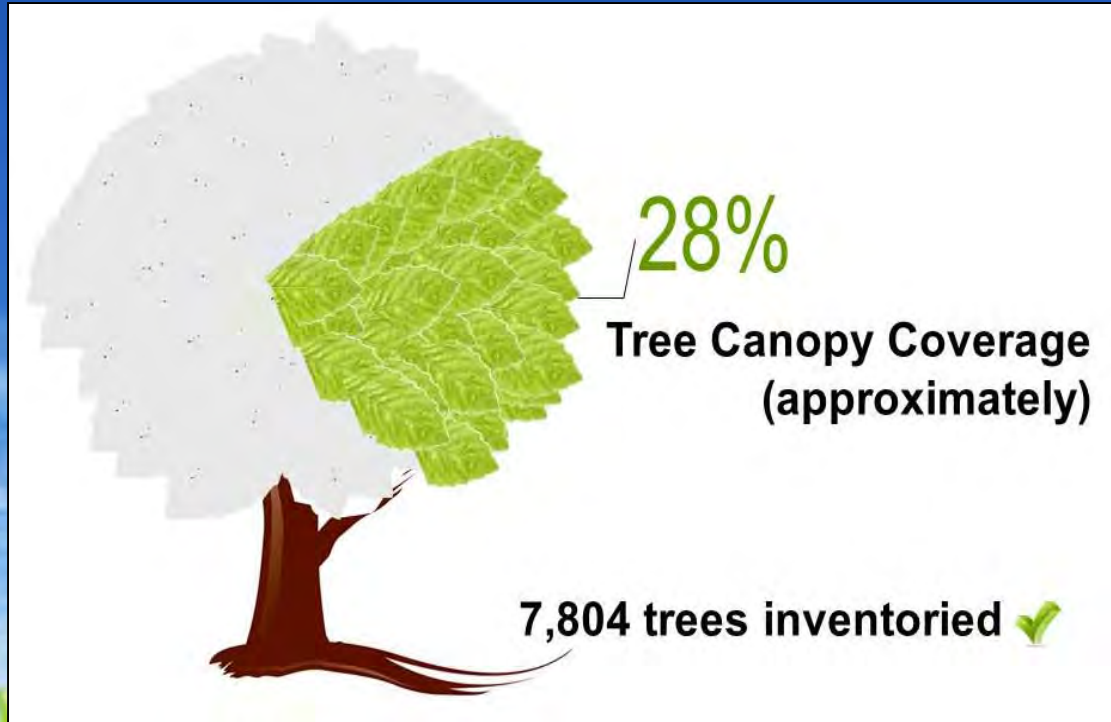


# Urban Nature



**RESIDENT ACCESS TO  
PARKS & GREEN SPACE**  
(1/2 mile proximity buffers)  
UPDATED: February 2013

97.9% within 1/2 mile  
2.1% not covered



# Energy

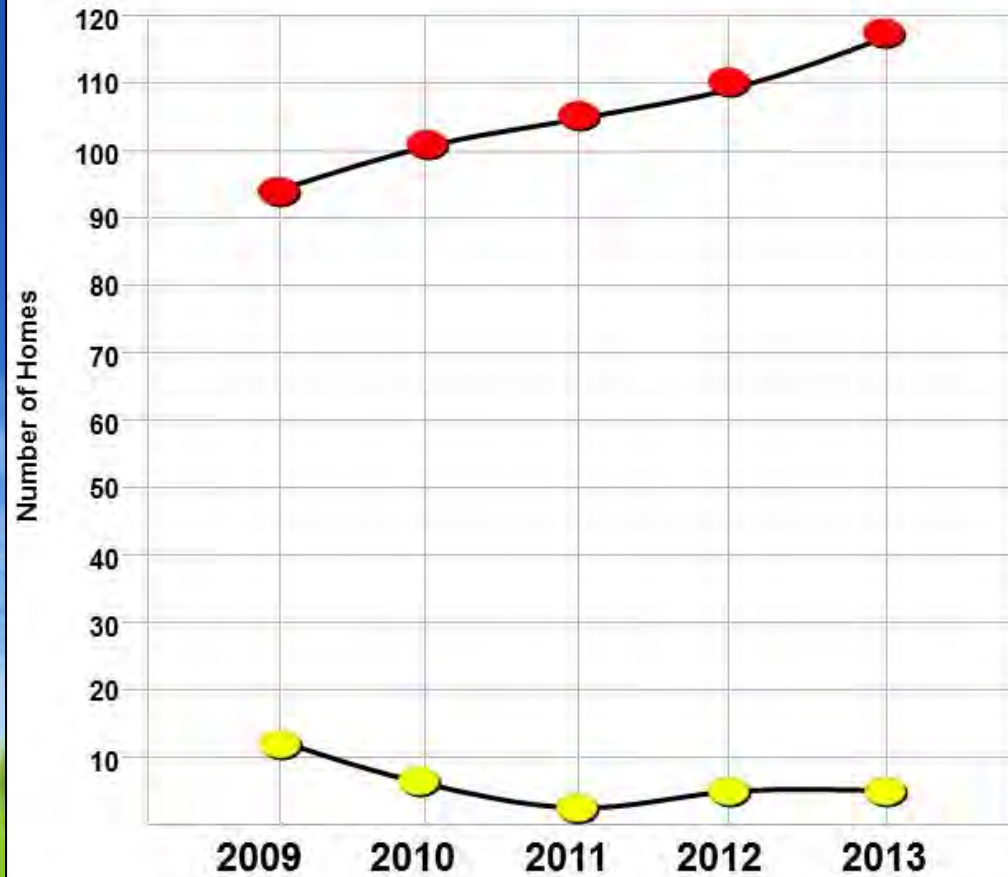


## Legend

- Residential (single family)
- ★ Commercial Facility
- ★ Public/Community Facility

## CITYWIDE SOLAR USAGE

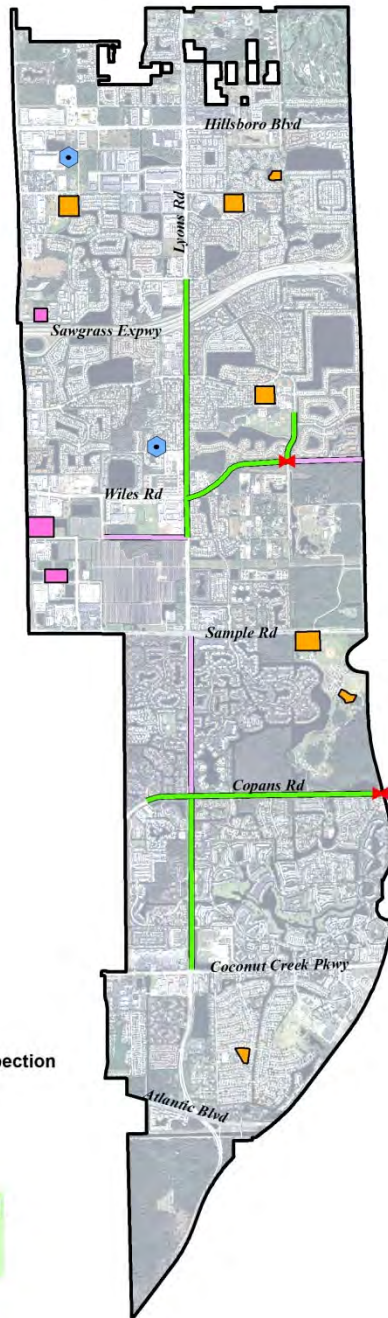
UPDATED: February 2014



● Total SFR Homes with Solar

● New Permits per Year

# Water



## Legend

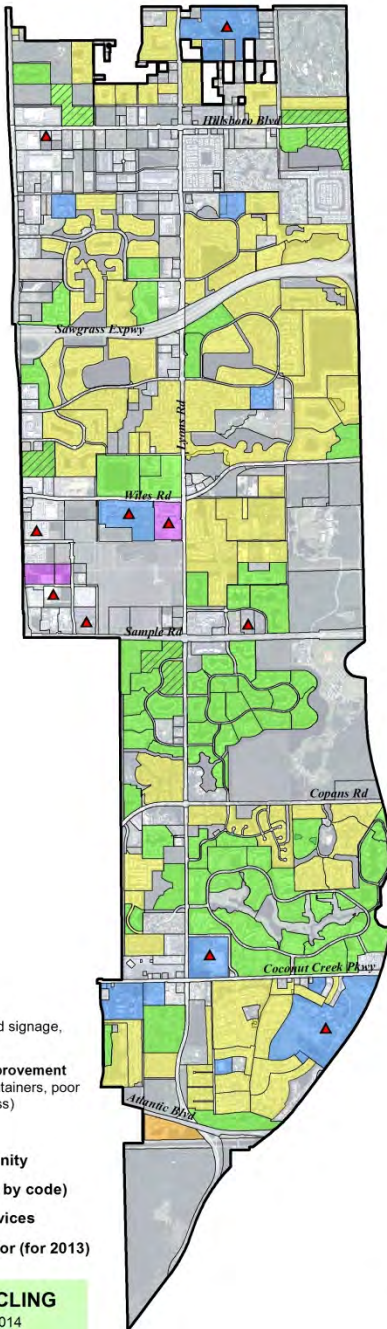
- County Connection
- City Tank
- Nature Scape Broward Inspection
- Project Utilizing Cisterns
- Reclaimed, Planned
- Reclaimed, Existing

## WATER CONSERVATION PROJECTS

Updated February 2014

| Month                                     | Residential | Commercial | Total       |
|---|-------------|------------|-------------|
| January                                   | 112,409     | 17,725     | 130,134     |
| February                                  | 119,051     | 18,695     | 137,746     |
| March                                     | 102,260     | 16,329     | 118,589     |
| April                                     | 116,114     | 18,440     | 134,554     |
| May                                       | 103,007     | 19,277     | 122,284     |
| June                                      | 105,954     | 17,303     | 123,257     |
| July                                      | 91,946      | 18,094     | 110,040     |
| August                                    | 100,145     | 19,100     | 119,245     |
| September                                 | 100,466     | 18,952     | 119,418     |
| October                                   | 91,186      | 16,007     | 107,193     |
| November                                  | 117,406     | 19,751     | 137,157     |
| December                                  | 103,527     | 16,407     | 119,934     |
| Monthly Average                           | 105,289     | 18,007     | 123,296     |
| <b>Total Avg Daily Consumption (MG)</b>   |             |            | <b>4.11</b> |
| Avg # Customers - Residential             |             |            | 10,854      |
| Avg # Customers - Commercial              |             |            | 738         |
| Avg Daily Consumption-Residential (MG)    |             |            | 3.51        |
| Avg Daily Consumption-Commercial (MG)     |             |            | 0.60        |
| Avg Annual Consumption - Residential (MG) |             |            | 1,281.15    |
| Avg Annual Consumption - Commercial (MG)  |             |            | 219.00      |

# Waste Reduction

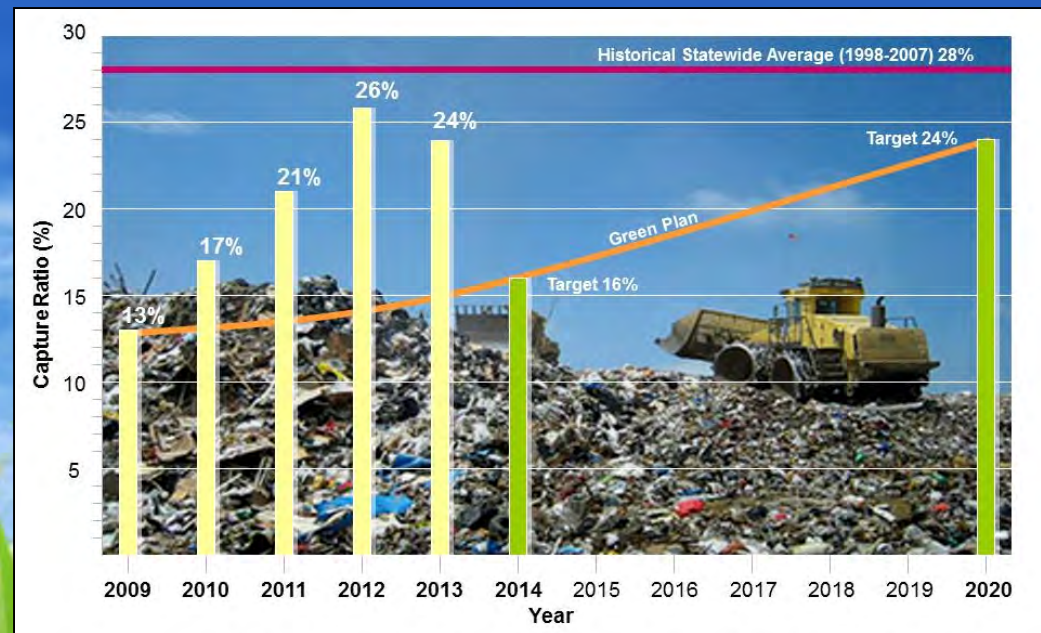


## Legend

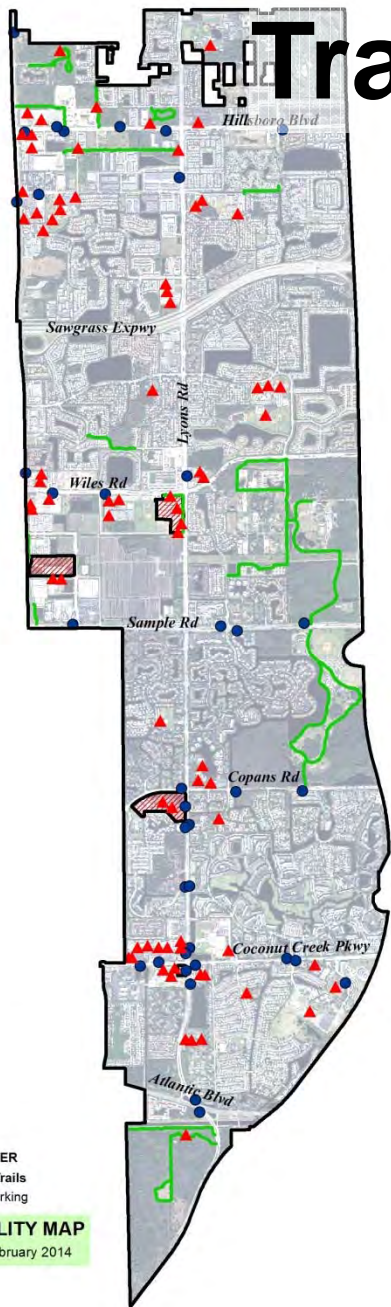
- Multi-family - Adequate  
(sufficient containers, good signage, good access)
- Multi-Family - Needs Improvement  
(insufficient amount of containers, poor or no signage, poor access)
- City Schools
- Single Family Community
- Commercial (required by code)
- Recycle Bin Valet Services
- ▲ Top 10 Waste Generator (for 2013)

## CITY-WIDE RECYCLING

Updated: February 2014

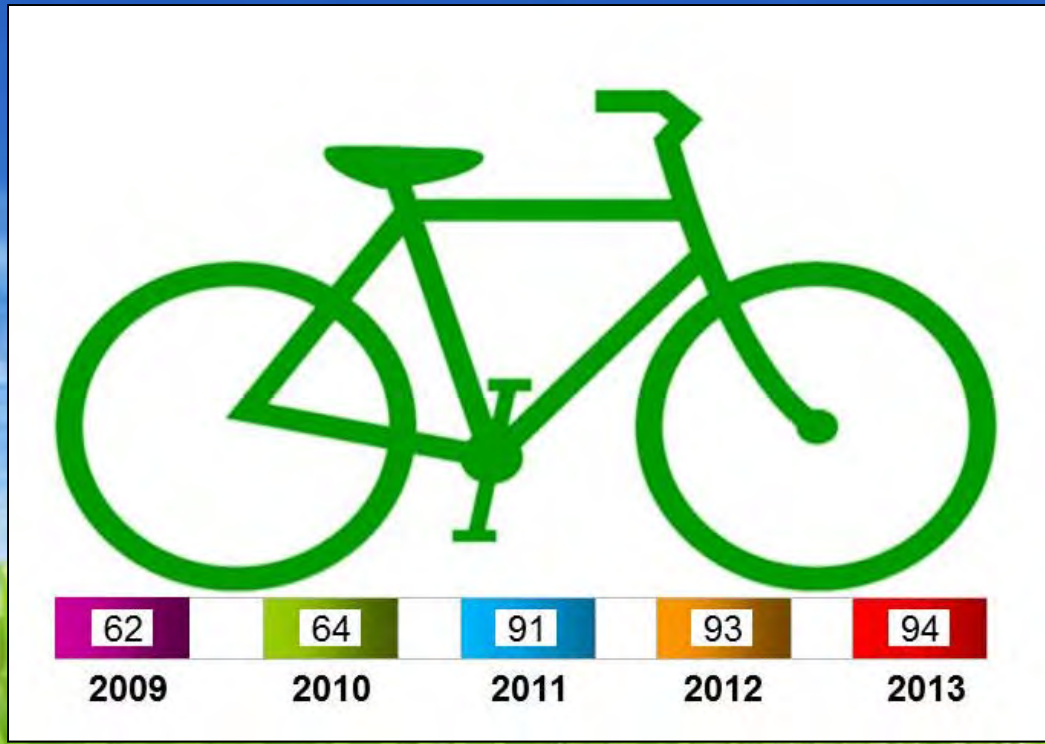


# Transportation/Mobility



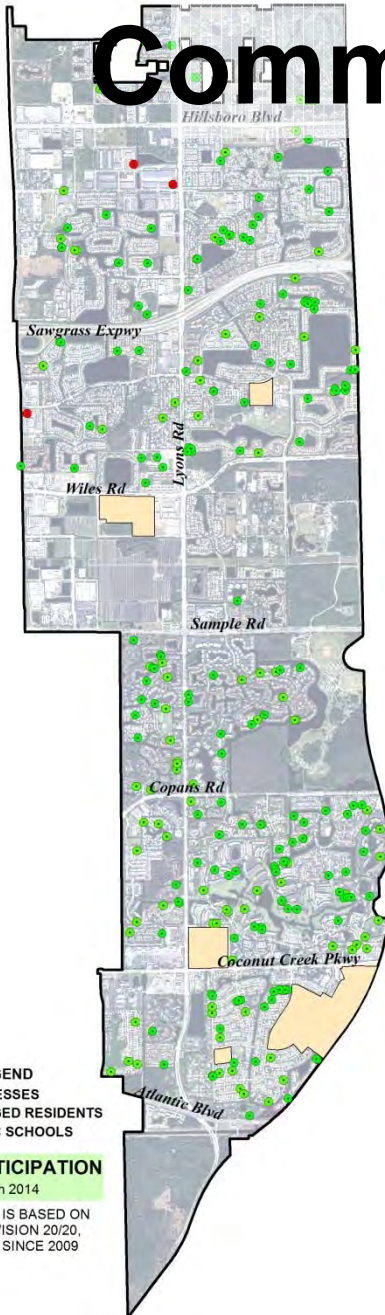
- Legend
- ▲ Bike Rack
  - BUS SHELTER
  - Greenway Trails
  - ▨ AltVehicleParking

**CITY MOBILITY MAP**  
Updated: February 2014





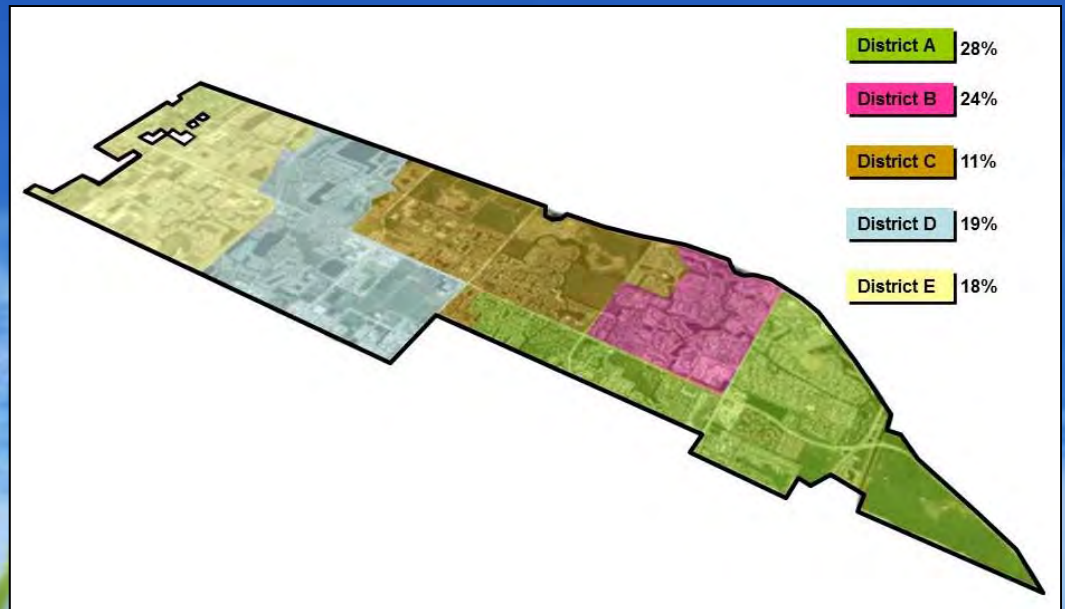
# Community Participation



## COMMUNITY PARTICIPATION

UPDATED: March 2014

\*NOTE: PARTICIPATION IS BASED ON CITIZENS ACADEMY, VISION 20/20, AND VOLUNTEERISM SINCE 2009



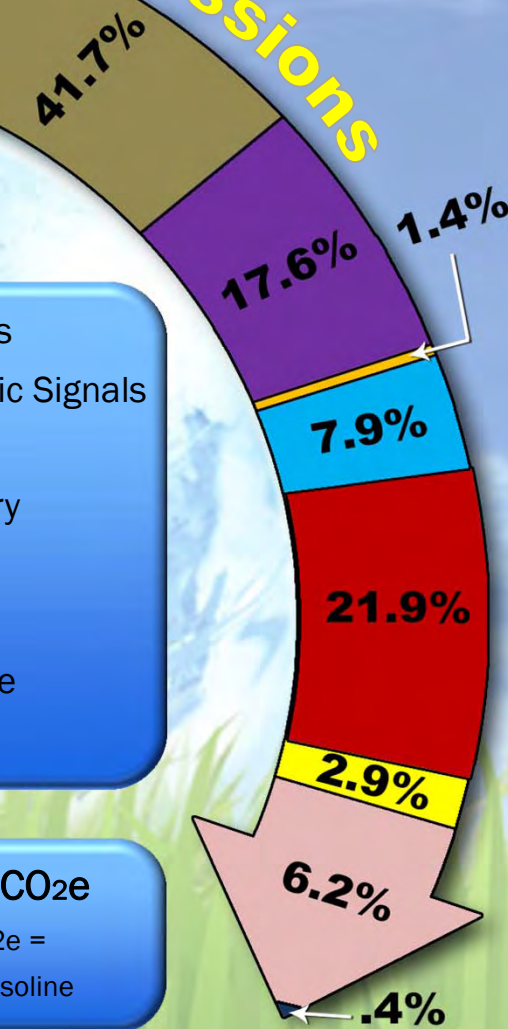
# City Operations



## 2012 GHG Emissions

- Building & Facilities
- Streetlights & Traffic Signals
- Water Delivery
- Wastewater Delivery
- Vehicle Fleet
- Transit Fleet
- Employee Commute
- Fugitive Emissions

**6,246 tonnes of CO<sub>2</sub>e**  
 6,246 tonnes of CO<sub>2</sub>e =  
 699,552 gallons of gasoline



**Credit Achievement**  
**LEED for New Construction v2009**  
**City Public Works Administration Building**

**Total**  
**54 | 110**  
 Earned | Possible

|  |                                     |                |
|--|-------------------------------------|----------------|
|  | <b>Sustainable Sites</b>            | <b>19   26</b> |
|  | <b>Water Efficiency</b>             | <b>3   10</b>  |
|  | <b>Energy and Atmosphere</b>        | <b>8   35</b>  |
|  | <b>Materials and Resources</b>      | <b>7   14</b>  |
|  | <b>Indoor Environmental Quality</b> | <b>10   15</b> |
|  | <b>Innovation and Design</b>        | <b>6   6</b>   |
|  | <b>Regional Priority</b>            | <b>1   4</b>   |

## Action Steps

Results of each action step under Category 1

## Category 1: Main Street and Green Development

|     | ACTION OBJECTIVE   | ACTION SUMMARY   | PERFORMANCE MEASURE                                 | 2009 | 2010 | 2011 | 2012 | 2013 |
|-----|--|--|---|------|------|------|------|------|
| 1.1 | Achieve LEED <sup>®</sup> Certification for all buildings in the Main Street Project Area with at least 15% certified at Silver, Gold, or Platinum level.  | Status: <span style="color: green;">✓</span> In progress<br>Target Date: 2020<br>Data Sources: Site Plans, USGBC<br>Note: (1) Results are based on # of buildings not by project (2) % certified is based on cumulative total of issued COs since 2009   | # of buildings constructed (based on issued COs)    | 2    | 0    | 1    | 2    | 0    |
|     |  |  | # of buildings seeking certification                | 12   | 0    | 0    | 0    | 1    |
|     |  |  | # of buildings certified (cumulative)               | 0    | 14   | 14   | 14   | 14   |
|     |  |  | % certified as Silver, Gold, or Platinum            | 0%   | 100% | 93%  | 82%  | 82%  |
| 1.2 | Achieve LEED <sup>®</sup> Certification or Florida Green Building Coalition (FGBC) Certification on 50% of buildings outside the Main Street Project Area.   | Status: <span style="color: green;">✓</span> In progress<br>Target Date: 2020<br>Data Sources: Site Plans, USGBC, FGBC<br>Note: (1) Results are based on # of buildings not by project (2) % certified is based on cumulative total of issued COs since 2009 (3) Other green building programs have been added to this action (see map). | # of buildings constructed (based on issued COs)    | 7    | 11   | 7    | 6    | 23   |
|     |  |  | # of buildings seeking certification                | 2    | 0    | 0    | 1    | 0    |
|     |  |  | # of buildings certified (cumulative)               | 1    | 1    | 1    | 1    | 13   |
|     |  |  | % certified   | 14%  | 5%   | 4%   | 3%   | 24%  |
| 1.3 | Achieve LEED <sup>®</sup> Certification for all new City constructed buildings, and, when feasible, strive for Silver, Gold, or Platinum certification level.  | Status: <span style="color: green;">✓</span> In progress<br>Target Date: 2020<br>Data Sources: Site Plans, USGBC<br>Note: City's Public Works Administration EOC Building received LEED <sup>®</sup> Silver in December 2013   | # of city projects proposed                         | 0    | 1    | 1    | 1    | 0    |
|     |  |  | # of projects constructed (based on issued COs)     | 1    | 0    | 0    | 0    | 1    |
|     |  |  | # of buildings seeking certification                | 0    | 0    | 1    | 1    | 0    |
|     |  |  | # certified (cumulative)                            | 0    | 0    | 0    | 0    | 1    |
| 1.4 | Retrofit all City-owned buildings with green building techniques by 2020 and, where feasible, seek LEED <sup>®</sup> Existing Building Certification.  | Status: <span style="color: green;">✓</span> In progress<br>Target Date: 2020<br>Data Sources: Public Works Dept.  | # of retrofitted buildings                          | 4    | 3    | 2    | 0    | 0    |
|     |  |  | # of retrofitted buildings seeking certification    | 0    | 0    | 0    | 0    | 0    |
|     |  |  | # certified   | 0    | 0    | 0    | 0    | 0    |
| 1.5 | Create a "green" checklist by 2010 for use on all City projects such as engineering or landscape projects, permits, etc.   | Status: <span style="color: green;">✓</span> In progress<br>Target Date: 2013<br>Data Sources: -<br>Note: This action is being developed by Green Team   | Date checklist was created                          | -    | -    | -    | -    | -    |
|     |  |  | # of city projects                                  | -    | -    | -    | -    | -    |
| 1.6 | Ensure 100% of new development projects throughout the City contain conspicuous displays of green technology that function in the project design while providing a social, artistic, and environmental value.  | Status: <span style="color: green;">✓</span> In progress<br>Target Date: 2020<br>Data Sources: Site Plans<br>Note: New projects include those under review and approved since 2009   | # of new projects                                   | 2    | 3    | 7    | 8    | 13   |
|     |  |  | # of green tech/art displays proposed (cumulative)  | 2    | 3    | 3    | 4    | 4    |
|     |  |  | # of green tech/art displays constructed            | 0    | 0    | 0    | 1    | 1    |
| 1.7 | Create a Main Street Workforce Housing Incentive Program by 2010 in order to provide additional density for projects that demonstrate superior green building design while providing workforce housing, including those projects that seek LEED <sup>®</sup> Certification at Silver, Gold, or Platinum level. | Status: <span style="color: green;">✓</span> In progress<br>Target Date: 2013<br>Data Sources: Site Plans, USGBC<br>Note: Program completed by staff waiting for final City Commission approval.   | # of projects under review                          | -    | -    | -    | -    | -    |
|     |  |  | # of projects with residential use                  | -    | -    | -    | -    | -    |
|     |  |  | # of projects seeking incentive                     | -    | -    | -    | -    | -    |
|     |  |  | # of additional units provide through incentive     | -    | -    | -    | -    | -    |
| 1.8 | Create an educational eco-village within the Main Street Project Area that can promote the dual-use of school facilities and provide for eco-cultural activities.  | Status: <span style="color: red;">?</span> Undetermined<br>Target Date: 2020<br>Data Sources: -  | # of school properties in Main Street Area          | 1    | 1    | 1    | 1    | 1    |
|     |  |  | # of potential parcels                              | -    | -    | -    | -    | -    |
|     |  |  | # of proposed projects                              | -    | -    | -    | -    | -    |
| 1.9 | Increase residential density and promote mixed-use for projects that support planned long-range transportation systems such as the U.S. 441/State Road 7 Corridor or Educational Corridor.   | Status: <span style="color: green;">✓</span> In progress<br>Target Date: 2020<br>Data Sources: Site Plans<br>Note: (1) New projects include those under review and approved since 2009 (2) % is based on new projects  | # of new projects (cumulative)                      | 2    | 2    | 4    | 4    | 5    |
|     |  |  | # of projects higher density/mixed-use (cumulative) | 1    | 1    | 3    | 3    | 4    |
|     |  |  | % of projects support action                        | 50%  | 50%  | 75%  | 75%  | 75%  |

# Annual Report



## Category 1: MainStreet and Green Development

### Urban Design

Green Building - Urban Planning - Economic Development

#### Green Building Growth

There was a large increase in total construction for 2013 based on the completion of several multi-family residential buildings. Green building construction also increased based on the inclusion of new green programs for construction activity such as FGBC and National Builders Association (NABE) Green Building Program. Those programs have been recognized by the City as contributors to green building construction.



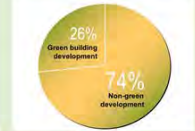
#### Quick Numbers

Below are quick reference numbers in relation to this category.

- # of actions for Category 1 → 9
- # of actions in progress → 8
- # of proposed green buildings → 15
- # of LEED® certified buildings → 16
- # of FGBC certified buildings → 0
- # of NAHB green certified buildings → 11

#### Total Construction

The percentage of green building construction has increased from the previous year from 19% of total construction to 26%.



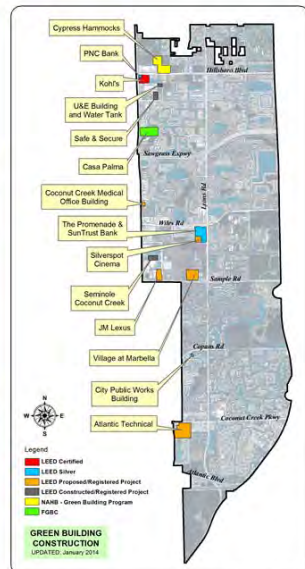
#### Green Building by Area

There has been a slight shift of green building construction with the majority being outside the MainStreet Project Area. This is expected until future development occurs in MainStreet.



#### USGBC Certification

Of the green construction projects, 5 have received LEED® certification. Below are the certification levels to date.



GREEN BUILDING CONSTRUCTION  
UPDATED: January 2014

Map available in larger print

## Action Steps

Results of each action step under Category 1

## Category 1: MainStreet and Green Development

| ACTION OBJECTIVE | ACTION SUMMARY  | PERFORMANCE MEASURE  | 2009  | 2010 | 2011 | 2012 | 2013 |
|------------------|---|--|---|------|------|------|------|
| 1.1              | Achieve LEED® Certification for all buildings in the MainStreet Project Area with at least 15% certified at Silver, Gold, or Platinum level.  | Status: <span style="color: green;">✓</span> In progress<br>Target Date: 2020<br>Data Sources: Site Plans, USGBC 2009. (1) Results are based on # of buildings not by project. (2) % certified is based on cumulative total of issued COs since 2009   | # of buildings constructed/assess on issues code: 2 | 0    | 1    | 2    | 0    |
|                  |   | # of buildings seeking certification: 12   | 0   | 0    | 0    | 0    | 1    |
|                  |   | # of buildings certified (cumulative): 0   | 14  | 14   | 14   | 14   | 14   |
|                  |   | % certified as Silver, Gold, or Platinum: 0%   | 100%  | 93%  | 82%  | 82%  |      |
|                  |   | # of buildings constructed/assess on issues code: 7  | 11  | 7    | 6    | 23   |      |
| 1.2              | Achieve LEED® Certification or Florida Green Building Coalition (FGBC) Certification on 50% of buildings outside the MainStreet Project Area.   | Status: <span style="color: green;">✓</span> In progress<br>Target Date: 2020<br>Data Sources: Site Plans, USGBC, FGBC 2009. (1) Results are based on # of buildings not by project. (2) % certified is based on cumulative total of issued COs since 2009. (3) Other green building programs have been added to this action (see map) | # of buildings seeking certification: 2             | 0    | 0    | 1    | 0    |
|                  |   | # of buildings certified (cumulative): 1   | 1   | 1    | 1    | 13   |      |
|                  |   | % certified: 14%   | 5%  | 4%   | 3%   | 24%  |      |
| 1.3              | Achieve LEED® Certification for all new City constructed buildings, and, when feasible, strive for Silver, Gold, or Platinum certification level.   | Status: <span style="color: green;">✓</span> In progress<br>Target Date: 2020<br>Data Sources: Site Plans, USGBC 2009. City Public Works Administration EOC Building received LEED® Silver in December 2013  | # of city projects proposed: 0                      | 1    | 1    | 1    | 0    |
|                  |   | # of projects constructed/assess on issues code: 1   | 0   | 0    | 0    | 1    |      |
|                  |   | # of buildings seeking certification: 0  | 0   | 1    | 1    | 0    |      |
|                  |   | # certified (cumulative): 0  | 0   | 0    | 0    | 1    |      |
| 1.4              | Retrofit all City-owned buildings with green building techniques by 2020 and, where feasible, seek LEED® Existing Building Certification.   | Status: <span style="color: green;">✓</span> In progress<br>Target Date: 2020<br>Data Sources: Public Works Dept.  | # of retrofitted buildings: 4                       | 3    | 2    | 0    | 0    |
|                  |   | # of retrofitted buildings seeking certification: 0  | 0   | 0    | 0    | 0    |      |
|                  |   | # certified: 0   | 0   | 0    | 0    | 0    |      |
| 1.5              | Create a "green" checklist by 2010 for use on all City projects such as engineering or landscape projects, permits, etc.  | Status: <span style="color: green;">✓</span> In progress<br>Target Date: 2013<br>Data Sources: -<br>Note: This action is being developed by Green Team   | Date checklist was created: -                       | -    | -    | -    | -    |
|                  |   | # of city projects: -  | -   | -    | -    | -    | -    |
| 1.6              | Ensure 100% of new development projects throughout the City contain conspicuous displays of green technology that function in the project design while providing a social, artistic, and environmental value.   | Status: <span style="color: green;">✓</span> In progress<br>Target Date: 2020<br>Data Sources: Site Plans 2009. New projects include those under review and approved since 2009  | # of new projects: 2                                | 3    | 7    | 8    | 13   |
|                  |   | # of green tech/art displays proposed (cumulative): 2  | 3   | 3    | 4    | 4    |      |
|                  |   | # of green tech/art displays constructed: 0  | 0   | 0    | 1    | 1    |      |
|                  |   | # of projects under review: -  | -   | -    | -    | -    | -    |
| 1.7              | Create a MainStreet Workforce Housing Incentive Program by 2010 in order to provide additional density for projects that demonstrate superior green building design while providing workforce housing, including those projects that seek LEED® Certification at Silver, Gold, or Platinum level. | Status: <span style="color: green;">✓</span> In progress<br>Target Date: 2013<br>Data Sources: Site Plans, USGBC 2009. Program completed by staff waiting for final City Commission approval   | # of projects with residential use: -               | -    | -    | -    | -    |
|                  |   | # of projects seeking incentive: -   | -   | -    | -    | -    | -    |
|                  |   | # of additional units provided through incentive: -  | -   | -    | -    | -    | -    |
| 1.8              | Create an educational eco-village within the MainStreet Project Area that can promote the dual-use of school facilities and provide for eco-cultural activities.  | Status: <span style="color: red;">?</span> Undetermined<br>Target Date: 2020<br>Data Sources: -  | # of school properties in MainStreet Area: 1        | 1    | 1    | 1    | 1    |
|                  |   | # of potential parcels: -  | -   | -    | -    | -    | -    |
|                  |   | # of proposed projects: -  | -   | -    | -    | -    | -    |
| 1.9              | Increase residential density and promote mixed-use for projects that support planned long-range transportation systems such as the U.S. 441 State Road 7 Corridor or Educational Corridor.  | Status: <span style="color: green;">✓</span> In progress<br>Target Date: 2020<br>Data Sources: Site Plans 2009. (1) New projects include those under review and approved since 2009. (2) % is based on new projects  | # of new projects (cumulative): 2                   | 2    | 4    | 4    | 5    |
|                  |   | # of projects higher density/mixed-use (cumulative): 1   | 1   | 3    | 3    | 4    |      |
|                  |   | % of projects support action: 50%  | 50%   | 75%  | 75%  | 75%  |      |

# FGBC Gold Certification



The Intuitive Talent

Date: January 22, 2013

Contact: Suzanne B. Cook, CAE  
PH: 870-894-3422  
Email: cook@intuitivetalent.com

## Coconut Creek Attains Green Government Certification FGBC Designation Confirms Environmental Leadership

(Tallahassee, FL) – The Florida Green Building Coalition (FGBC), a membership-based non-profit organization that establishes certification standards and provides education to promote sustainable building, development and business practices, has designated the city of Coconut Creek a certified Florida Green Local Government after it successfully met the sustainability standards established in the FGBC Green Local Government Certification program. Coconut Creek achieved 53 percent of its 111 applicable points, setting a pilot-level designation, the highest score of all FGBC certified local governments within Broward County and the 5th highest scoring local government in the state.

Suzanne Cook, FGBC Executive Director, said the designation demonstrates exemplary leadership by Coconut Creek's Mayor Towley and other elected officials who provided the framework and support to move forward with the process that helps to better manage the cost of government. "Their leadership in this effort will help promote and conserve the community's natural resources, enhance the efficiency of government thus reducing the cost to taxpayers, and raise public awareness about the benefits of environmental stewardship," Cook said. "Our membership applauds the municipality's dedication and commitment to the important goals outlined in this program."

In order to achieve the FGBC Green Local Government Certification, Coconut Creek will, led by Senior Planner Linda Whitman, undertake an extensive audit of the functions performed by every department within their government. The criteria included evaluations of energy and water usage, air quality, health issues, land use, recycling and waste disposal, maintenance policies, educational programs, purchasing practices, regulatory policies, and more others. From there teams used FGBC's program tools to identify methods to improve the sustainability of their business practices and operations.



# COCONUT CREEK CITY GREEN PLAN

## Contact Information and Website:

[www.coconutcreek.net](http://www.coconutcreek.net)

Sheila Rose – [Srose@coconutcreek.net](mailto:Srose@coconutcreek.net)

Linda Whitman – [Lwhitman@coconutcreek.net](mailto:Lwhitman@coconutcreek.net)

Green Plan: [http://www.coconutcreek.net/sd/living\\_green](http://www.coconutcreek.net/sd/living_green)



*"Creating a Culture of Green Excellence"*

**COCONUT  
CREEK**

Sustainable. Creative. at the Heart.



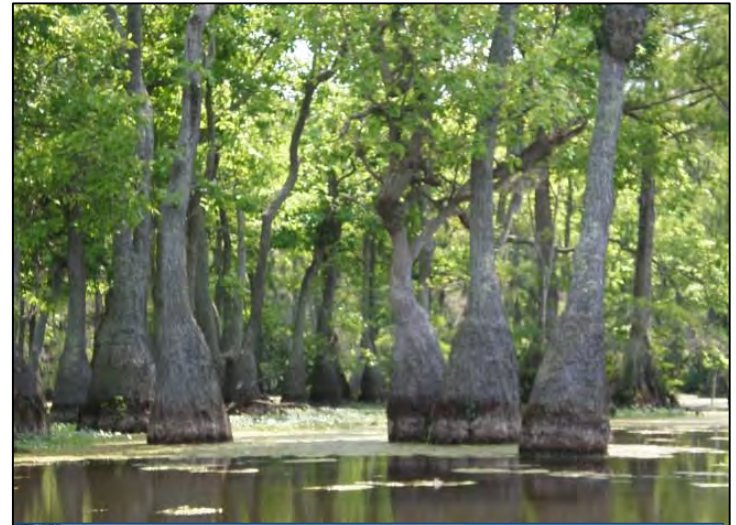
**Join Now!**

*costs:*

Annual \$500 membership  
Stage 2 (one-time) fee  
+ Travel expenses for site visit

**benefits**

- Engagement tools
- Planning assistance
- Verification & certification
- Economic development
- Sense of place
- Distinguish city as leader



Audubon  
International



## Sustainable Communities

### Contact Information:

Joanna Nadeau

[joanna@auduboninternational.org](mailto:joanna@auduboninternational.org)

518-767-9051 Ext. 124

[www.auduboninternational.org](http://www.auduboninternational.org)



Linked in





# APA SUSTAINABLE COMMUNITIES DIVISION WEBINAR

March 26, 2015

## Q & A

- **Joanna Nadeau** - Director of Community Programs, Audubon International
- **Sal Celona** - Chair, Sustainability Community Alliance, Rio Verde, AZ
- **Sheila Rose, AICP** - Director, Department of Sustainable Development, Coconut Creek, FL
- **Linda Whitman, RLA** - Senior Planner, Coconut Creek, FL



American Planning Association  
**Sustainable Communities Division**

*Making Great Communities Happen*



# Thank You!

- Event # 29898 – log CM at [www.planning.org/cm](http://www.planning.org/cm)
  - If you have any questions or experience an issue reporting your CM credits, please contact [AICPCM@planning.org](mailto:AICPCM@planning.org)
- Evaluation survey
  - [www.surveymonkey.com/r/APASCD1](http://www.surveymonkey.com/r/APASCD1)
- Comments or webinar ideas: [apascd@gmail.com](mailto:apascd@gmail.com)
- Recently launched the MindMixer page for the APA Smart Cities Initiative - check it out!
  - [sustainablecommunities.mindmixer.com](http://sustainablecommunities.mindmixer.com)